



Port Health

A small island perspective

Dr Val Cameron

Inter Island Public Health Forum

12th June 2015



Current issues in Guernsey

- Day to day activities
- Compliance with IHR 2005
- Ebola and Port Health Preparedness
- Training and development - competence

Day-to-day activities

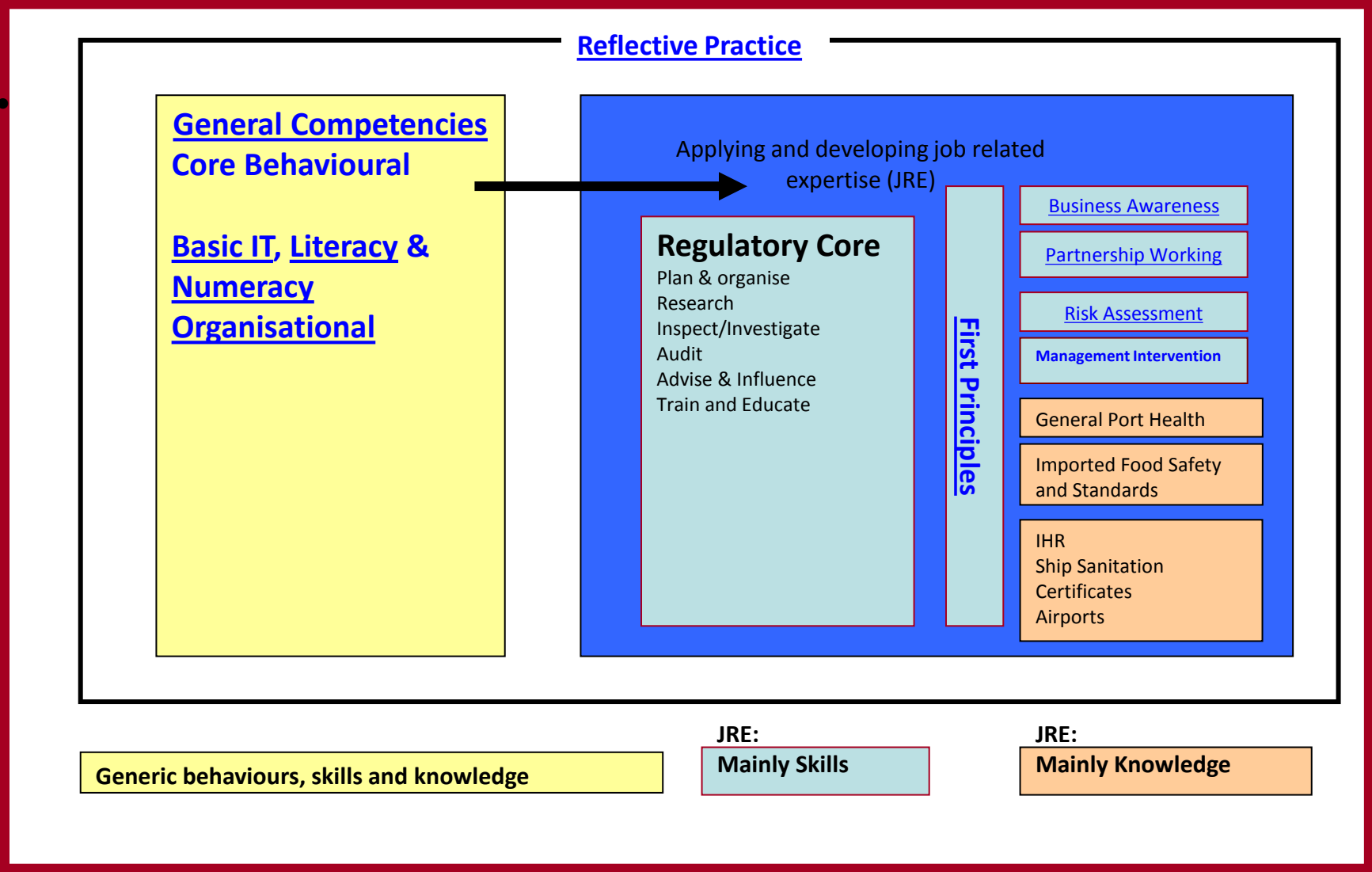
- “Free Pratique” – the single window project
- IHR reports, international disease surveillance
- Surveillance on food imports
- Shellfish – harvesting area classifications
- Ship Sanitation Certification (Exemptions)
- Risk assessment and prioritisation

Compliance with IHR

- Annex 1 B

- To provide access to medical facilities
- To provide access to equipment and personnel for transport of ill passengers
- To provide trained personnel for the inspection of conveyances
- To ensure a safe environment for travellers using point of entry facilities including potable water supplies, eating establishments, flight catering facilities, public washrooms, solid and liquid waste disposal, by conducting inspection programmes
- To provide a programme and trained personnel for the control of vectors and reservoirs near the points of entry

Competence Framework – Port Health Regulators



Ebola and Port Health Preparedness



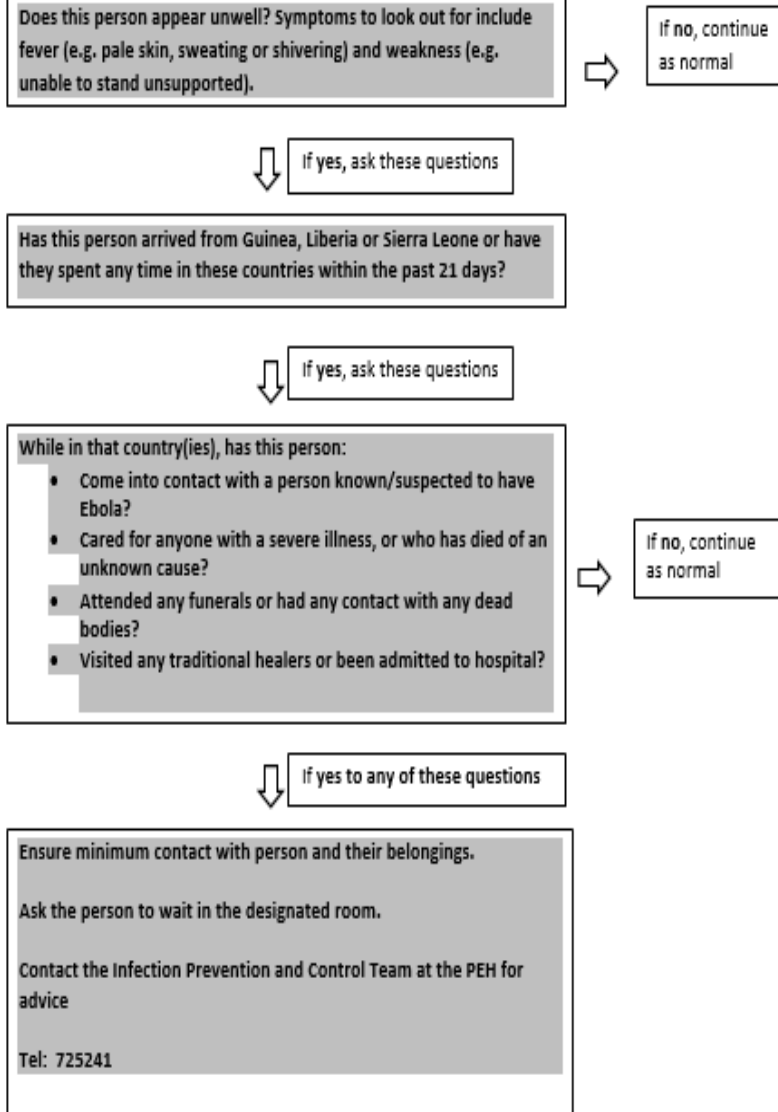
- Plan for the worst case scenario
- Carry out a risk assessment of facilities, activities and services
- Train staff on the 'front line' - AOs
- Maintain an overview
- Plan for other incidents - Norovirus



Algorithm

Ebola assessment by Border Force

Algorithm to inform the initial assessment of passengers by Border Force staff.





PASSPORT CONTROL

Expatriate Services
Before the Baggage

Information
on the passport control
process





Exit
↓
Sortie

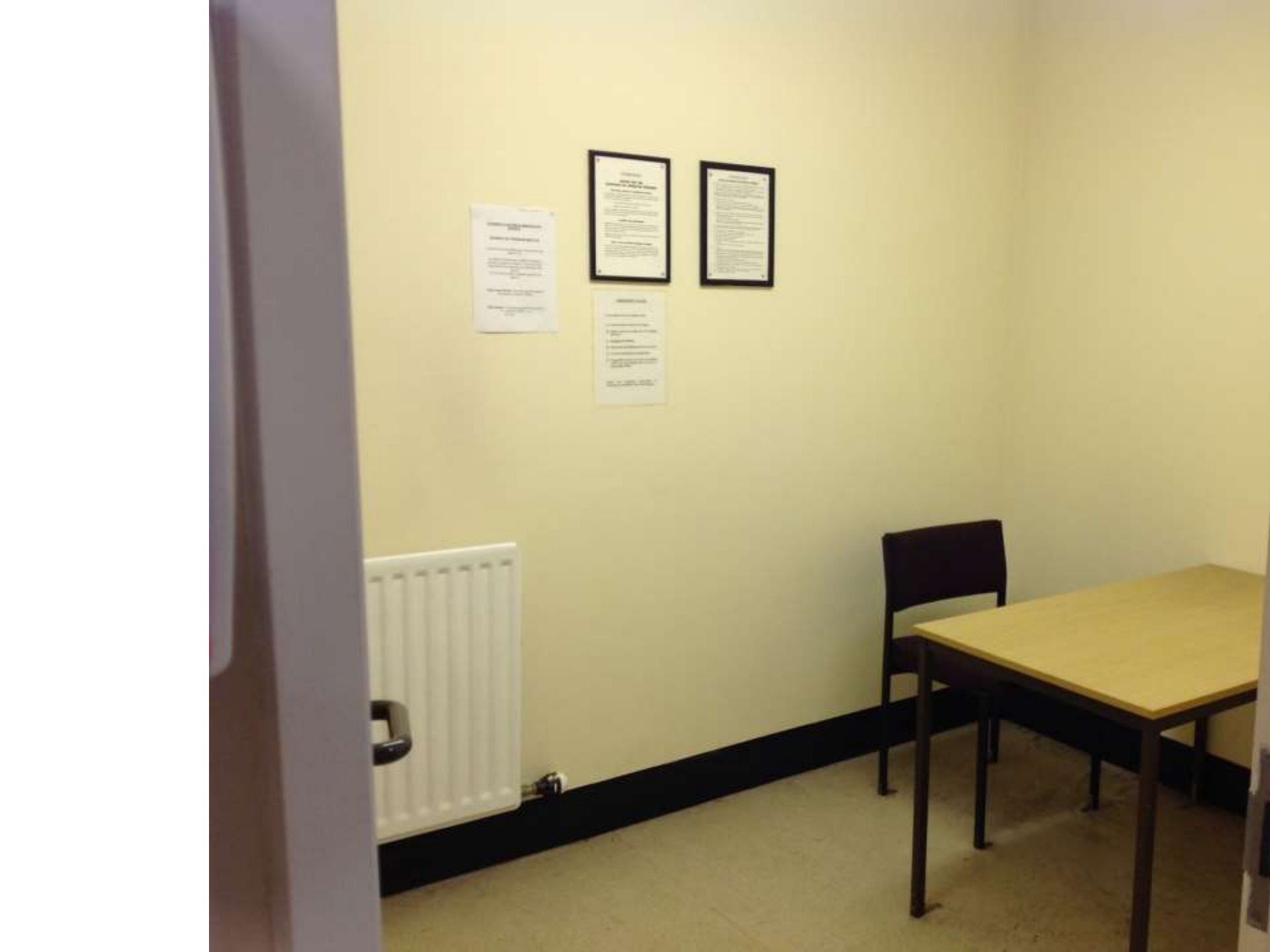
Exit
↓
Sortie

Sortie

PROHIBITION
D'ACCÈS

Document posted on the glass door.





← Check in

← Enregistremen

← Telephones →

KIOSK

NO ENT

ARRIVAL



Thank you for listening!

