

## Greetings from APHA

- **APHA conference in Manchester last week**
- **Hot topics**
  - Advance of mosquitoes
  - New methods of disinsection
  - New membership category for island port authorities

## MoU with German coastal authorities



## Ship Sanitation Control Certificates or Ship Sanitation Control Exemption Certificates – Article 39, Annex 3

- **Issued from 15<sup>th</sup> June 2007**
- **Derat Certificates no longer legal**
- **In Jersey, we will only issue SSC Exemption Certificates as we do not have sufficient resources locally**
- **First SSCE Certificate issued 22<sup>nd</sup> April for MV Condor 10**

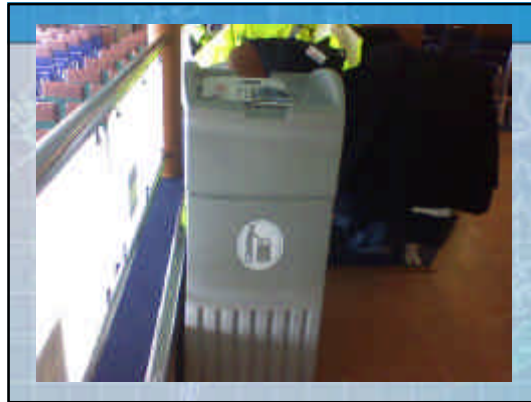
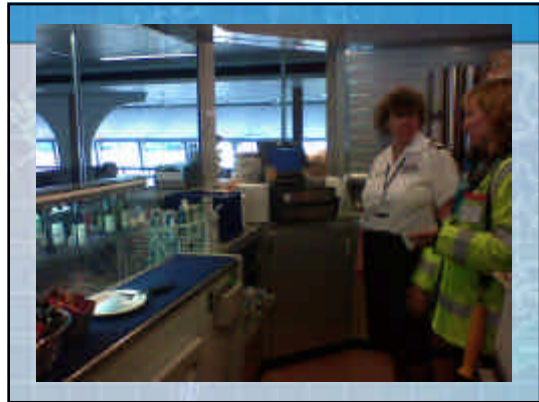
## Ship Inspection for SSC

- Potable water Tanks/Systems
- Food safety Galley/stores
- Swimming pools/spas Treatment
- Waste disposal refuse/effluent/catering
- Accommodation crew/public
- General PH controls vector control
- Medical facilities C&D, ID
- Cargo Holds/containers
- Management



Whole vessel inspection





Ship Inspection Management System (SIMS)

**Martin Craven & Chris Anderson**  
**MC Computer Systems**  
**APHA Annual Conference 2008**

**Introduction**

The APHA-SIMS Pilot is now underway

9 Port Health Authorities

**Port Health Authorities**

- Aberdeen
- Blyth
- Hull
- Ipswich
- Liverpool
- Manchester
- Pembroke
- South Ayrshire
- Southampton

## APHA-SIMS

Ship Inspections for all functions:-

Sanitation Certificates

Sampling

Complaints



## PDA Screen Shots

Additional Information, Owner/Agent and Inspection Type Screens



## PDA Screen Shots

Food Sample

Standard Questions

Animals



## But WHY?

- \* Maximise Efficiency
- \* Make the most of limited resources
- \* Maximise Income
- \* No duplication of effort
- \* Nobody escapes!



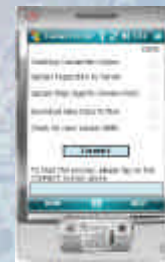
## Join the Information Age

ALL data saved on a central Database

Easy access to INFORMATION

Reports that YOU want

In the way that YOU want them



## Planning

Only inspect ships in NEED of an Inspection

No more wasted visits to ships with valid certification, good practices and NO problems.



## Planning

Be fully aware of 'problem' vessels

Keep colleagues in other ports up to date



## The Future

THE WORLD?