



Inter-Island PH Forum

Surg Cdr J Neary RN
CMO, BF Gibraltar
19 Sep 08

What do we do?

- Defence Health Care
- Primary and Secondary Care
- Entitled Population of 1400
 - Mixed military and civilian
 - All employed, all <65, most medically screened



Defence Health Care

- Owned by UK Defence
- Desired Medical Outputs defined in Defence Health Programme
 - Efficient restoration of operational fitness
 - Force Protection
 - Battle Injury and DNBI management
 - Health Promotion



The Military Context

- Military healthcare is primarily directed at delivering effective military force
 - *In the final analysis our business is the application of military force – often lethal force. In other words, this is the requirement to fight and, if necessary, risk injury or death, in order to achieve our Government's objectives.*



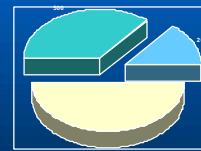
Mission

- Provide the **highest possible standard** of **integrated primary and secondary** medical and dental health care to the **entitled population**



Entitled Population

- Ruled by indemnity
- Military Personnel
- MoD and FCO civil servants
- Dependents
- Visiting Units



Entitled Population

- Ethnically homogeneous
- Young
- Employed
- Disciplined
- Medically screened



What do we do?

- Comprehensive Primary Care
 - Clinical, Occupational, Environmental
- Emergency Secondary Care
- Pre-Hospital Emergency Care
- Medical Contingencies
 - Support GHA MIMMS



Princess Royal Medical Centre



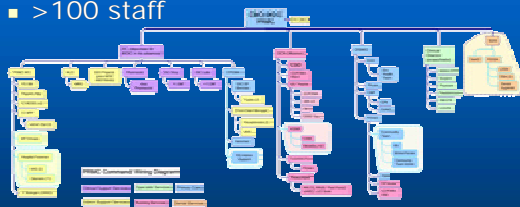
Primary and Secondary Care

- 2 GPs (+ CMO)
- Physio led Rehab Unit
- CPN
- Community Team
- Dental suite
- 5 Consultants
- A&E/Rx Room
- 9 bed ward (1 HD)
- OT
- Midwifery Suite (7 midwives)
- Lab & X-ray
- Admin Support



Our Staff

- >100 staff



Risks

- Churn of Staff and Patients
- Staff Morale and Skill Fade
- Diverse Cultures of 1° & 2° Care
- Health Records
- Long Supply Lines



Risks

- Distant Secondary Care
- Complex Patient Pathways
- Managing Chronic Disease
- Patient & Staff Expectations
- Cost Pressures



Quality Assurance

- Specialist Reviews by Defence Consultant Advisers
- CG Audit by Military Chain
- CHKS audit in 2009
 - Secondary Care Model
- Engagement of Healthcare Commission



Resource Management

- LEAN event in Sep-Nov 09
- Review of our services against customer requirement
- Identify inefficiencies and waste
- Recommend changes in processes and resources



Any Questions?

